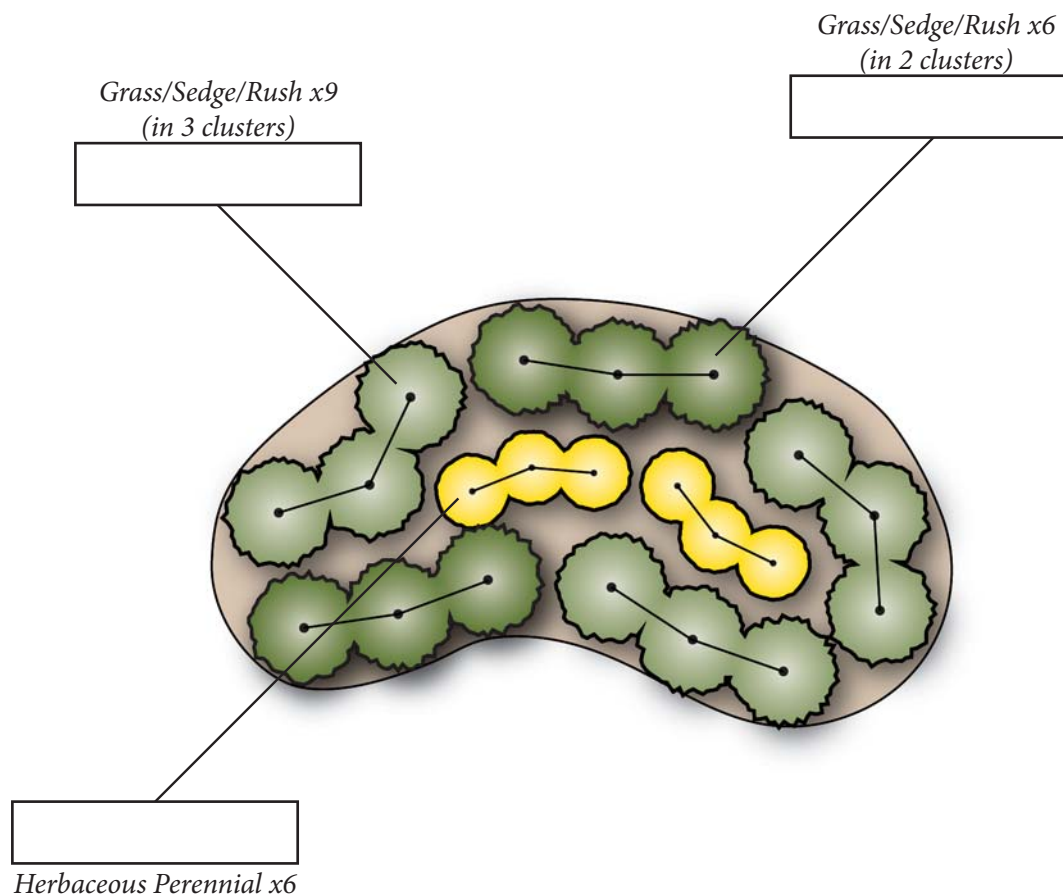


Simple Meadow Bayscape - 60 square feet (contained in 11.5 x 6.5 foot area)



Scale: 1 inch = 3 feet



Average Spacing between Plants

Refer to plant nursery tags and adjust as needed

Shrubs = 30"	Grasses = 18"	Perennials = 9-12"
--------------	---------------	--------------------

2 cubic feet of mulch covers ~12 square feet of the garden

 **Alliance for the
Chesapeake Bay**
visit stormwater.allianceforthebay.org

**CENTER FOR
WATERSHED
PROTECTION**

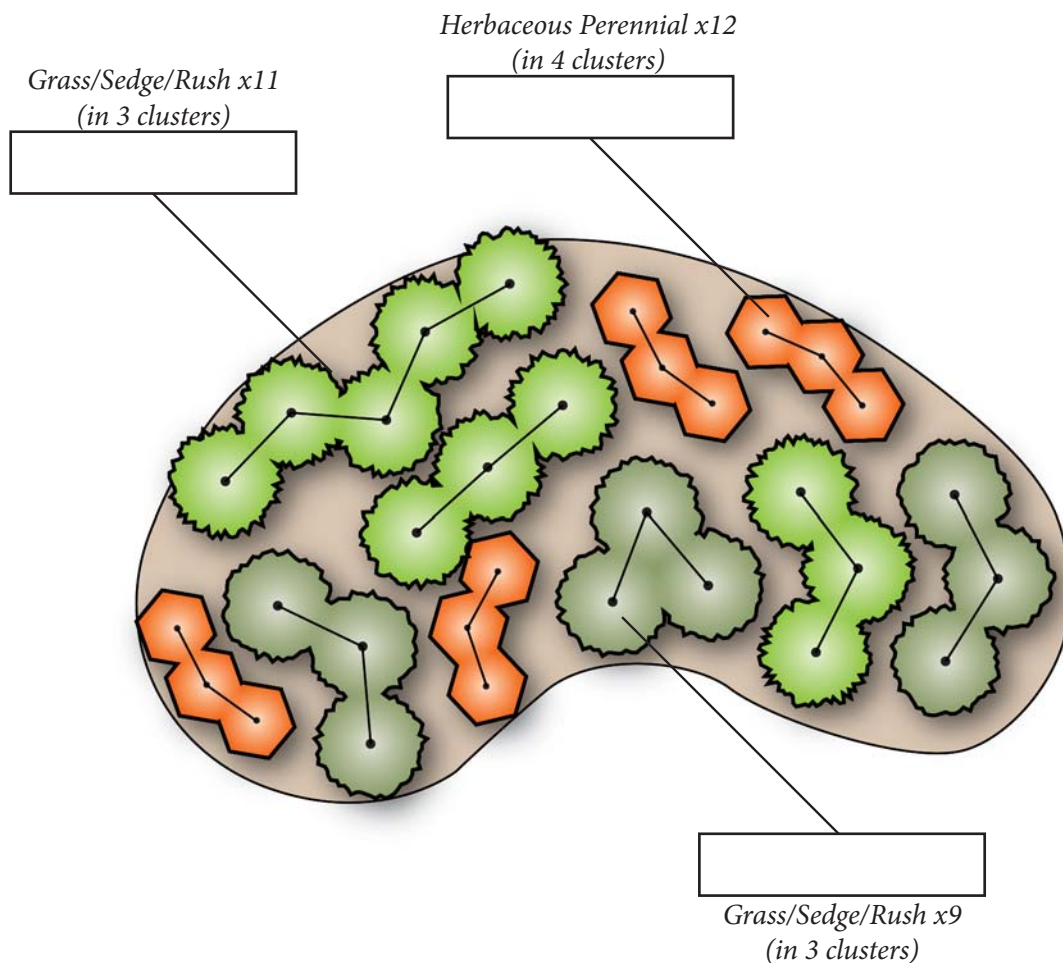
 **WSA**
National Capital Region - Watershed Stewards Academy

 **National Fish and Wildlife Foundation**



Consider adding a rain barrel to enhance your conservation landscape.

Simple Meadow Bayscape - 90 square feet (contained in 14.5 x 9 foot area)



Consider adding a rain barrel to enhance your conservation landscape.

Average Spacing between Plants

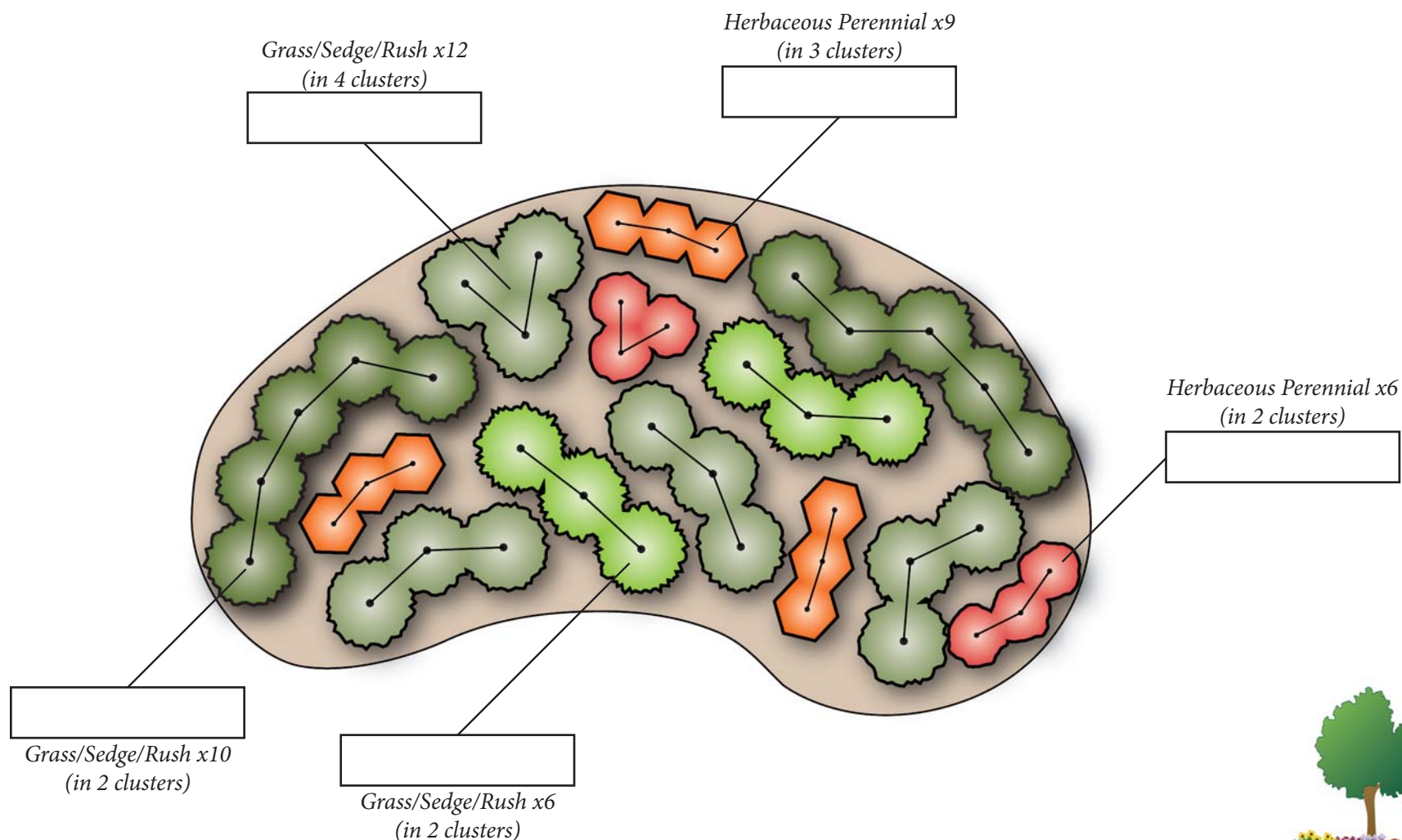
Refer to plant nursery tags and adjust as needed

Shrubs = 30"	Grasses = 18"	Perennials = 9-12"
--------------	---------------	--------------------

2 cubic feet of mulch covers ~12 square feet of the garden



Simple Meadow Bayscape - 120 square feet (contained in 17 x 10.5 foot area)



Scale: 1 inch = 3 feet



Average Spacing between Plants

Refer to plant nursery tags and adjust as needed

Shrubs = 30"	Grasses = 18"	Perennials = 9-12"
--------------	---------------	--------------------

2 cubic feet of mulch covers ~12 square feet of the garden



Consider adding a rain barrel to enhance your conservation landscape.

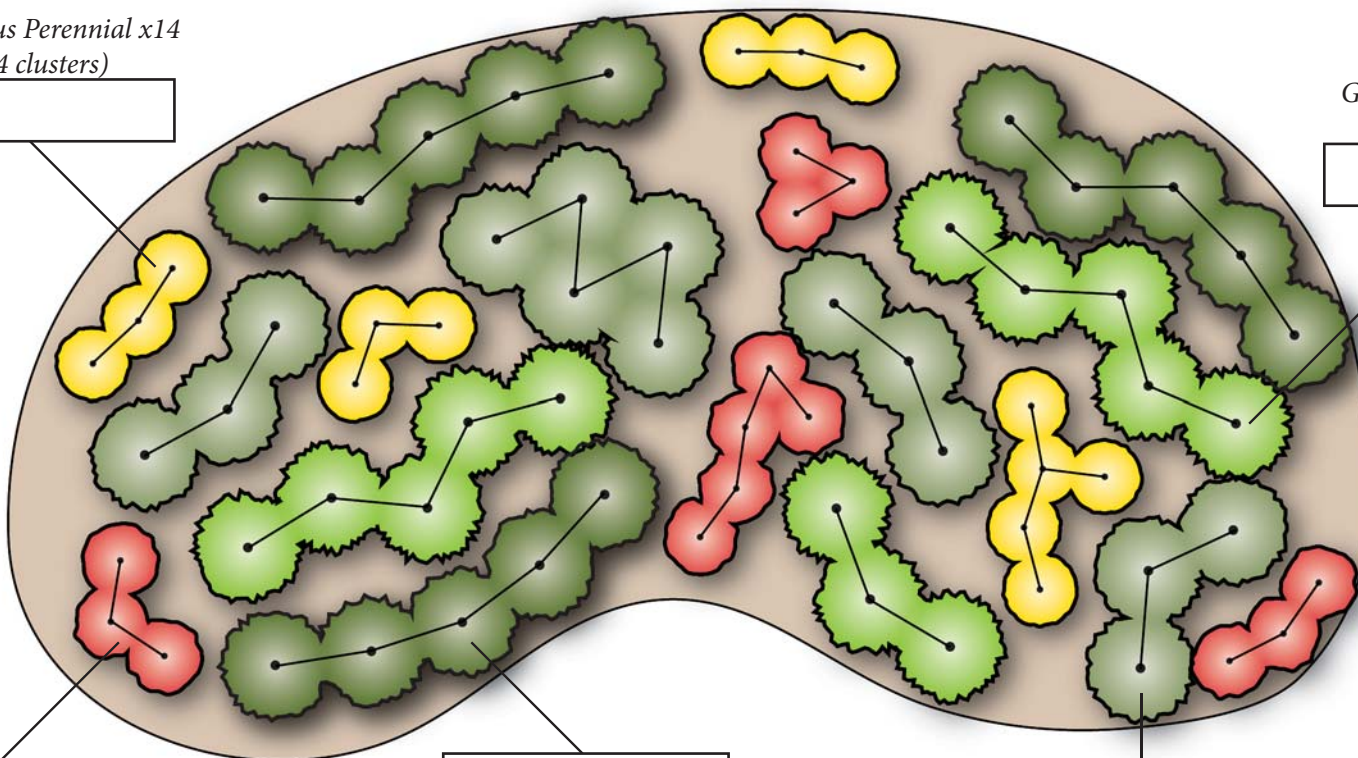
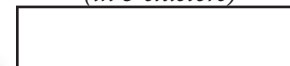


Simple Meadow Bayscape - 180 square feet (contained in 21 x 12.5 foot area)

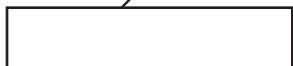
Herbaceous Perennial x14
(in 4 clusters)



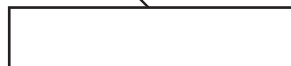
Grass/Sedge/Rush x13
(in 3 clusters)



Herbaceous Perennial x14
(in 4 clusters)



Grass/Sedge/Rush x15
(in 3 clusters)



Grass/Sedge/Rush x14
(in 4 clusters)



Scale: 1 inch = 3 feet



Consider adding a rain barrel to enhance your conservation landscape.

Average Spacing between Plants

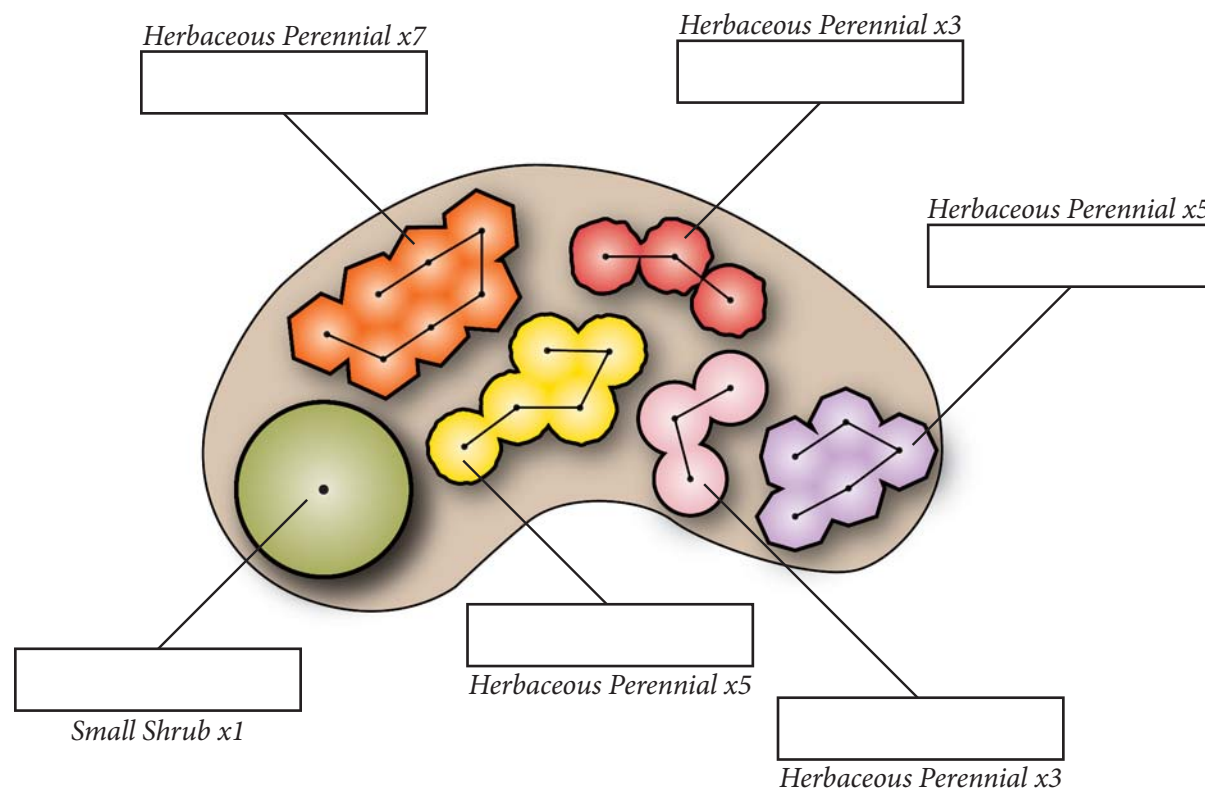
Refer to plant nursery tags and adjust as needed

Shrubs = 30"	Grasses = 18"	Perennials = 9-12"
--------------	---------------	--------------------

2 cubic feet of mulch covers ~12 square feet of the garden



Butterfly Garden Bayscape - 60 square feet (contained in 11.5 x 6.5 foot area)



Scale: 1 inch = 3 feet



Average Spacing between Plants

Refer to plant nursery tags and adjust as needed

Shrubs = 30"	Grasses = 18"	Perennials = 9-12"
--------------	---------------	--------------------

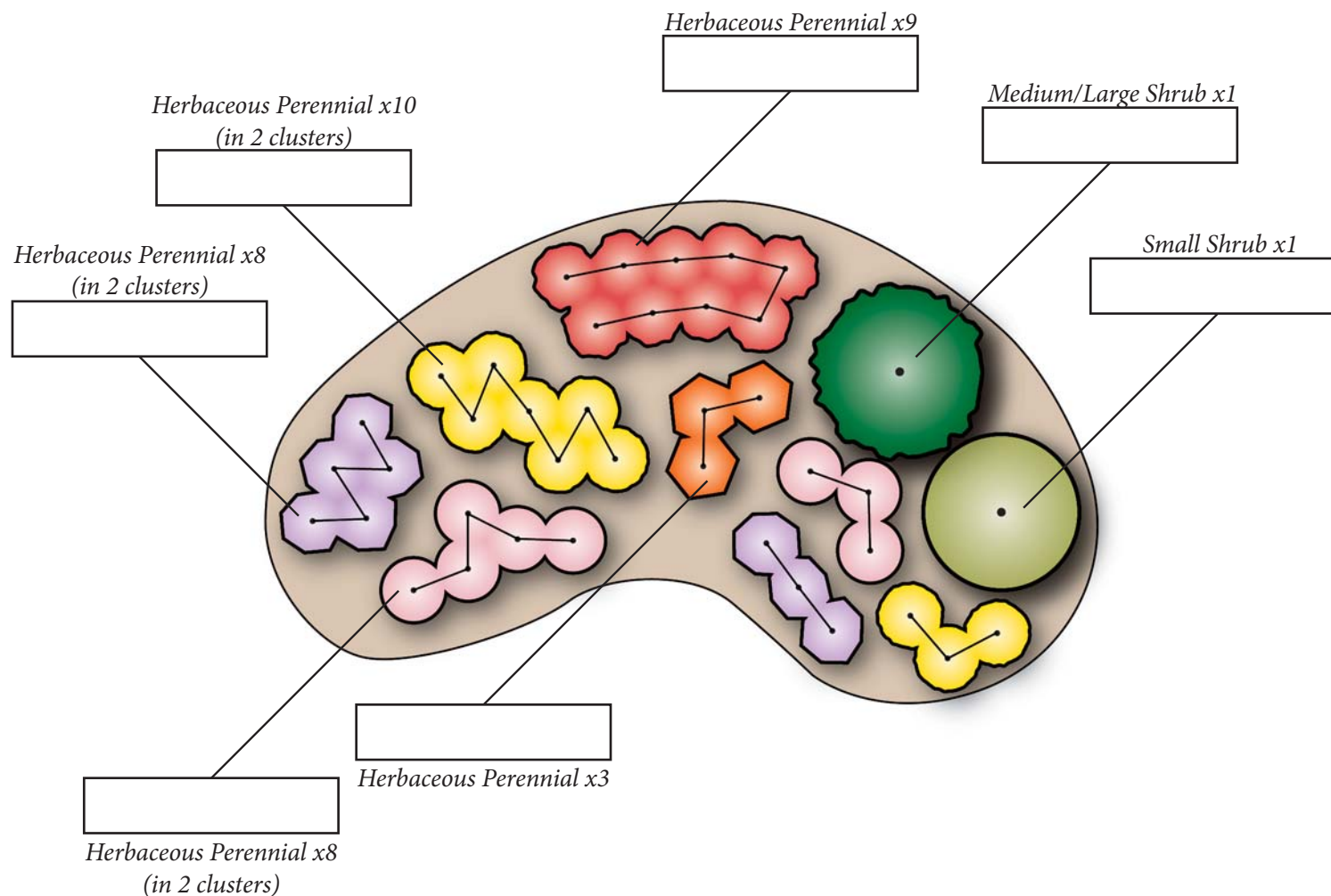
2 cubic feet of mulch covers ~12 square feet of the garden



Consider adding a rain barrel to enhance your conservation landscape.



Butterfly Garden Bayscape - 90 square feet (contained in 14.5 x 9 foot area)



Scale: 1 inch = 3 feet



Average Spacing between Plants

Refer to plant nursery tags and adjust as needed

Shrubs = 30"	Grasses = 18"	Perennials = 9-12"
--------------	---------------	--------------------

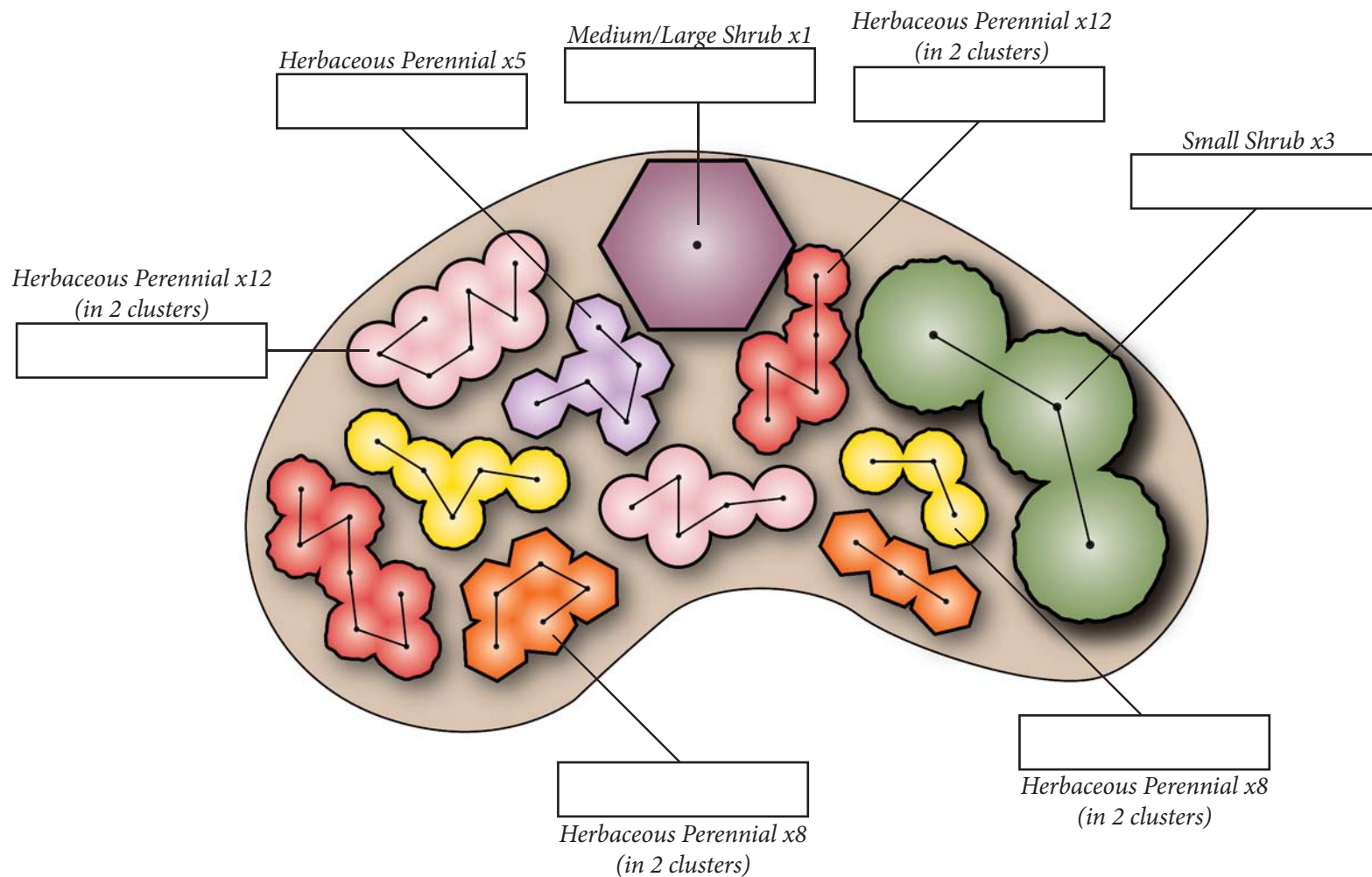
2 cubic feet of mulch covers ~12 square feet of the garden



Consider adding a rain barrel to enhance your conservation landscape.



Butterfly Garden Bayscape - 120 square feet (contained in 17 x 10.5 foot area)



Scale: 1 inch = 3 feet



Average Spacing between Plants

Refer to plant nursery tags and adjust as needed

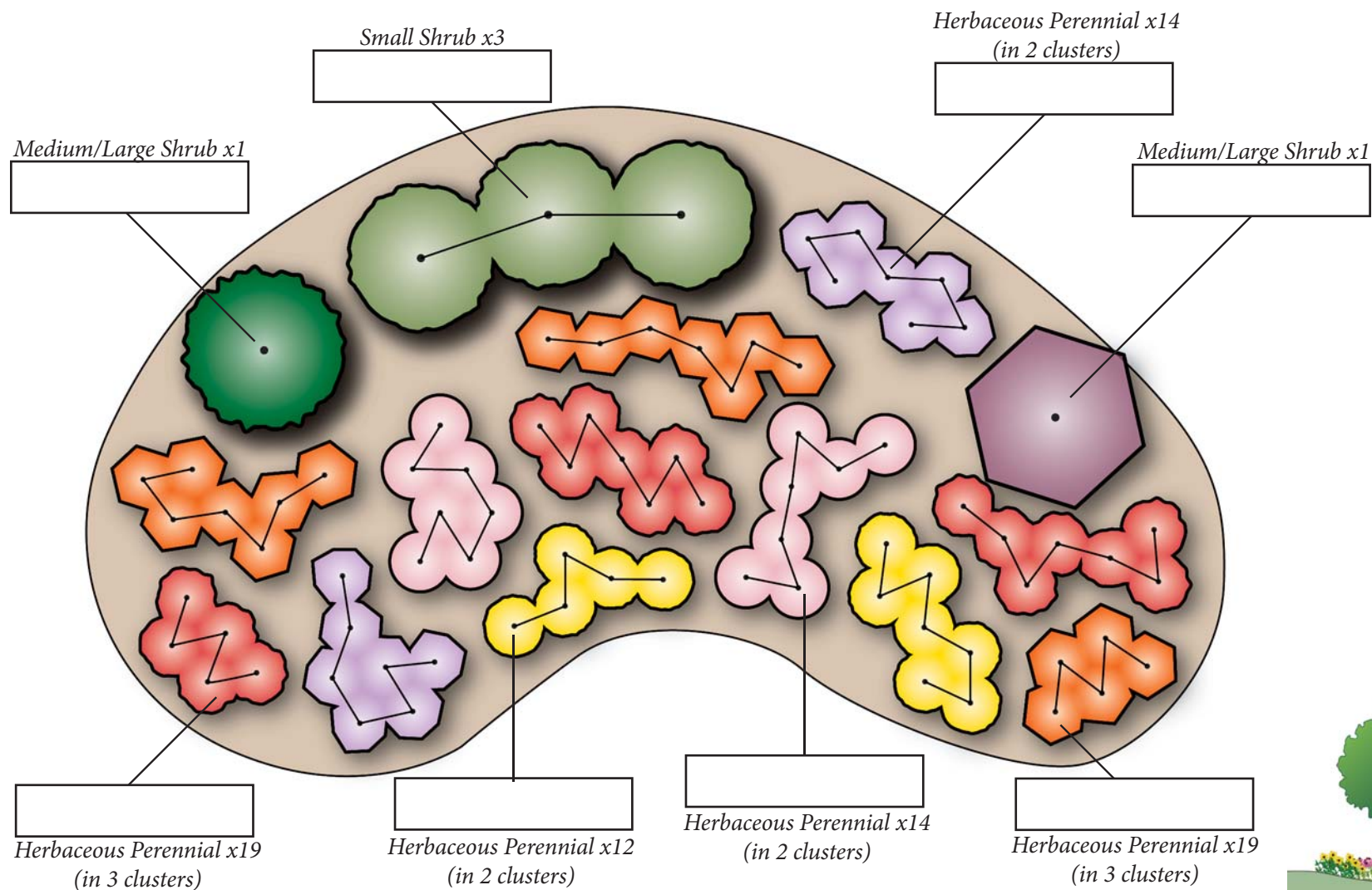
Shrubs = 30"	Grasses = 18"	Perennials = 9-12"
--------------	---------------	--------------------

2 cubic feet of mulch covers ~12 square feet of the garden



Consider adding a rain barrel to enhance your conservation landscape.

Butterfly Garden Bayscape - 180 square feet (contained in 21 x 12.5 foot area)



Scale: 1 inch = 3 feet



Average Spacing between Plants

Refer to plant nursery tags and adjust as needed

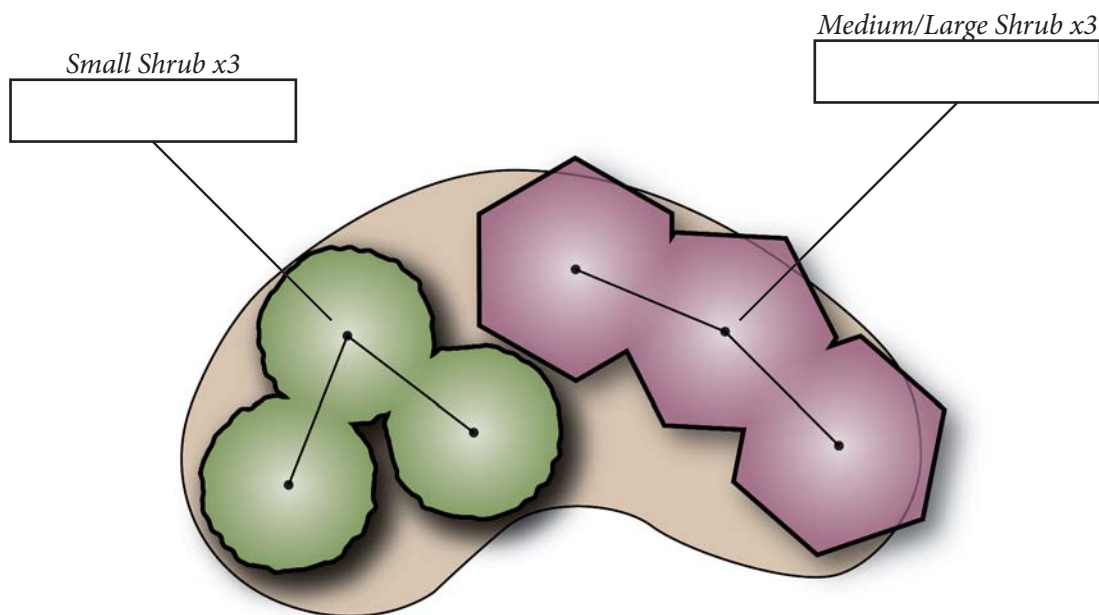
Shrubs = 30"	Grasses = 18"	Perennials = 9-12"
--------------	---------------	--------------------

2 cubic feet of mulch covers ~12 square feet of the garden



Consider adding a rain barrel to enhance your conservation landscape.

Woody Screen Bayscape - 60 square feet (contained in 11.5 x 6.5 foot area)



Scale: 1 inch = 3 feet



Average Spacing between Plants

Refer to plant nursery tags and adjust as needed

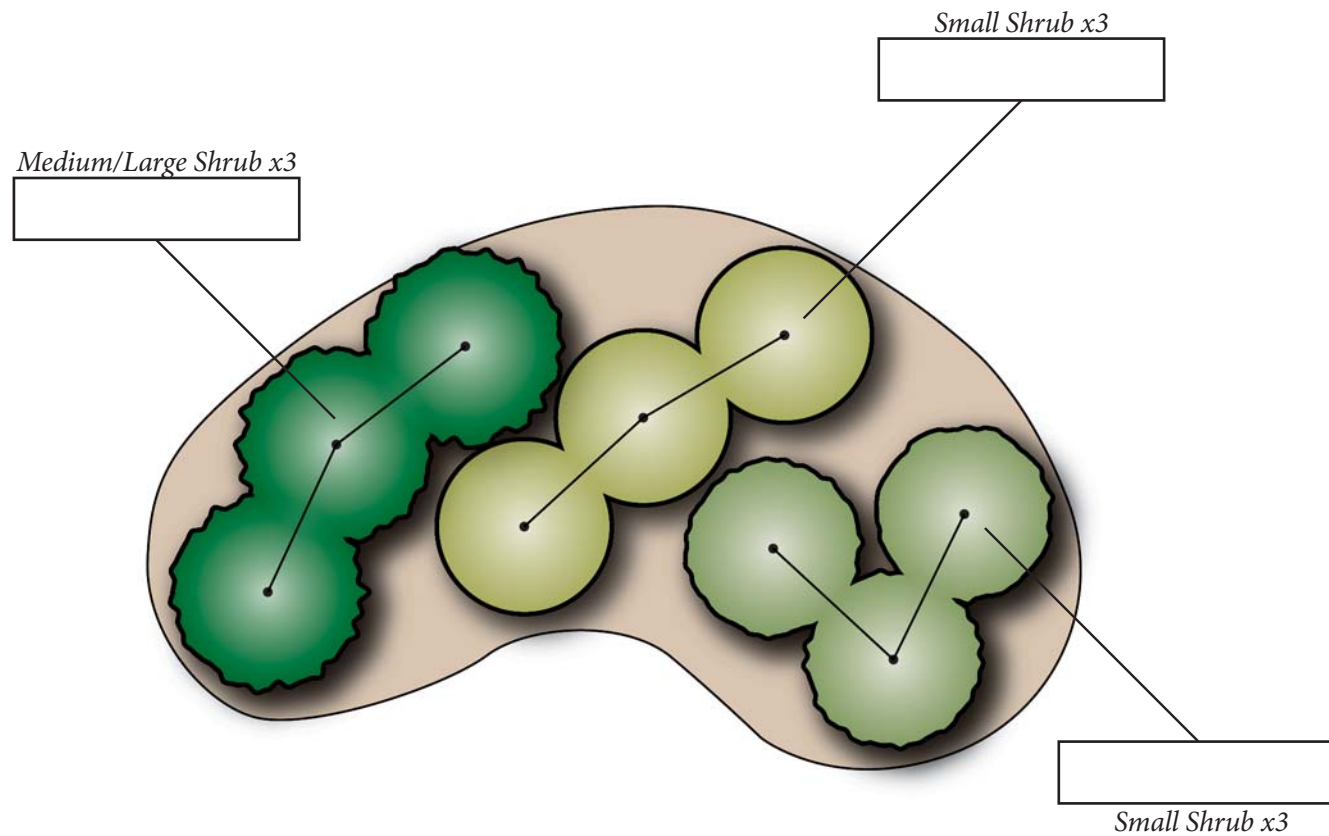
Shrubs = 30"	Grasses = 18"	Perennials = 9-12"
--------------	---------------	--------------------

2 cubic feet of mulch covers ~12 square feet of the garden



Consider adding a rain barrel to enhance your conservation landscape.

Woody Screen Bayscape - 90 square feet (contained in 14.5 x 9 foot area)



Scale: 1 inch = 3 feet

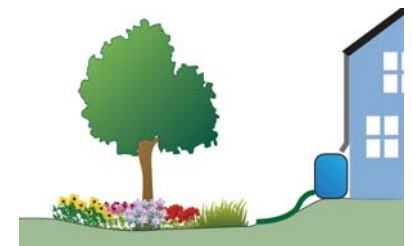


Average Spacing between Plants

Refer to plant nursery tags and adjust as needed

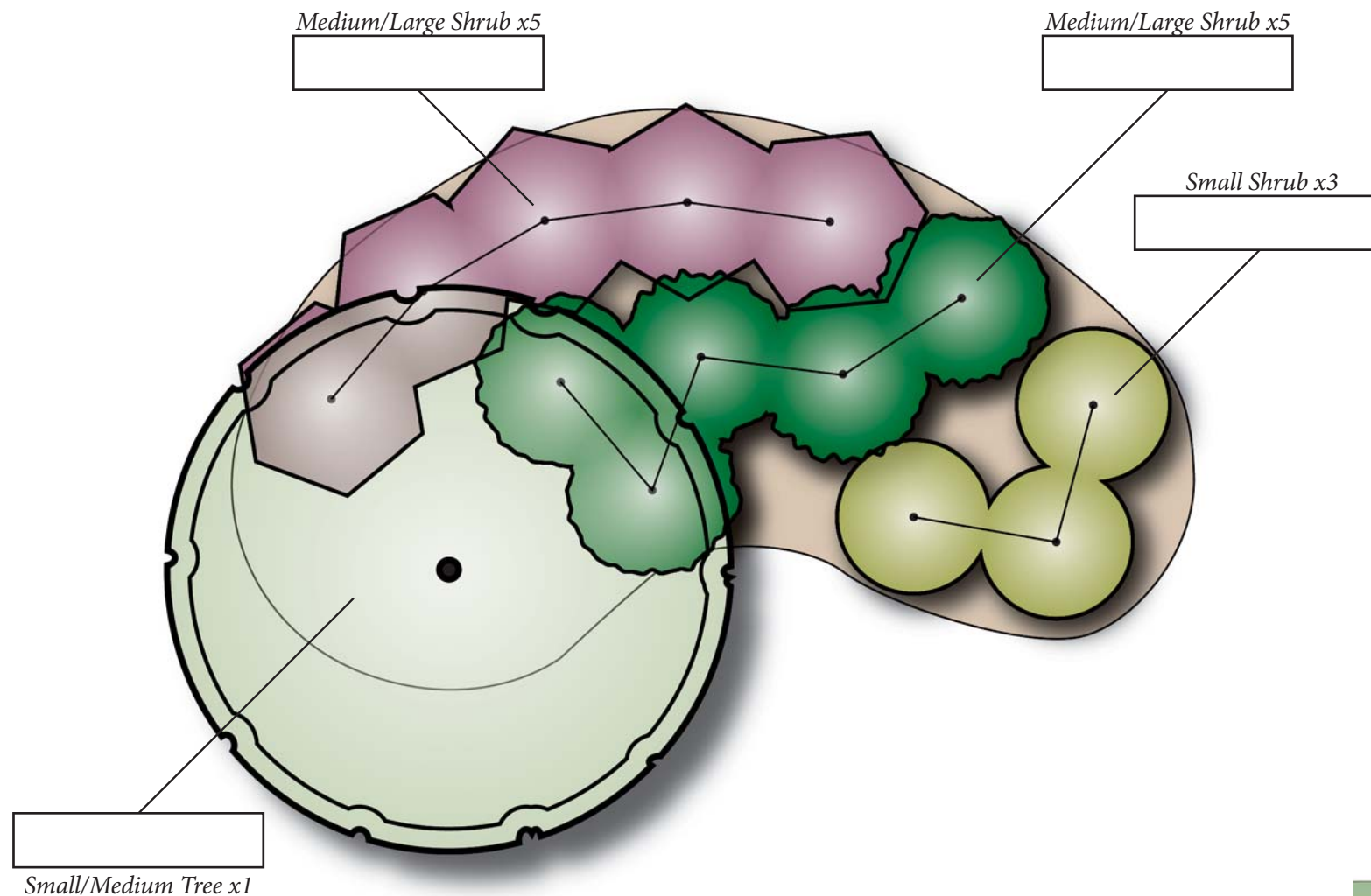
Shrubs = 30"	Grasses = 18"	Perennials = 9-12"
--------------	---------------	--------------------

2 cubic feet of mulch covers ~12 square feet of the garden



Consider adding a rain barrel to enhance your conservation landscape.

Woody Screen Bayscape - 120 square feet (contained in 17 x 10.5 foot area)



Average Spacing between Plants

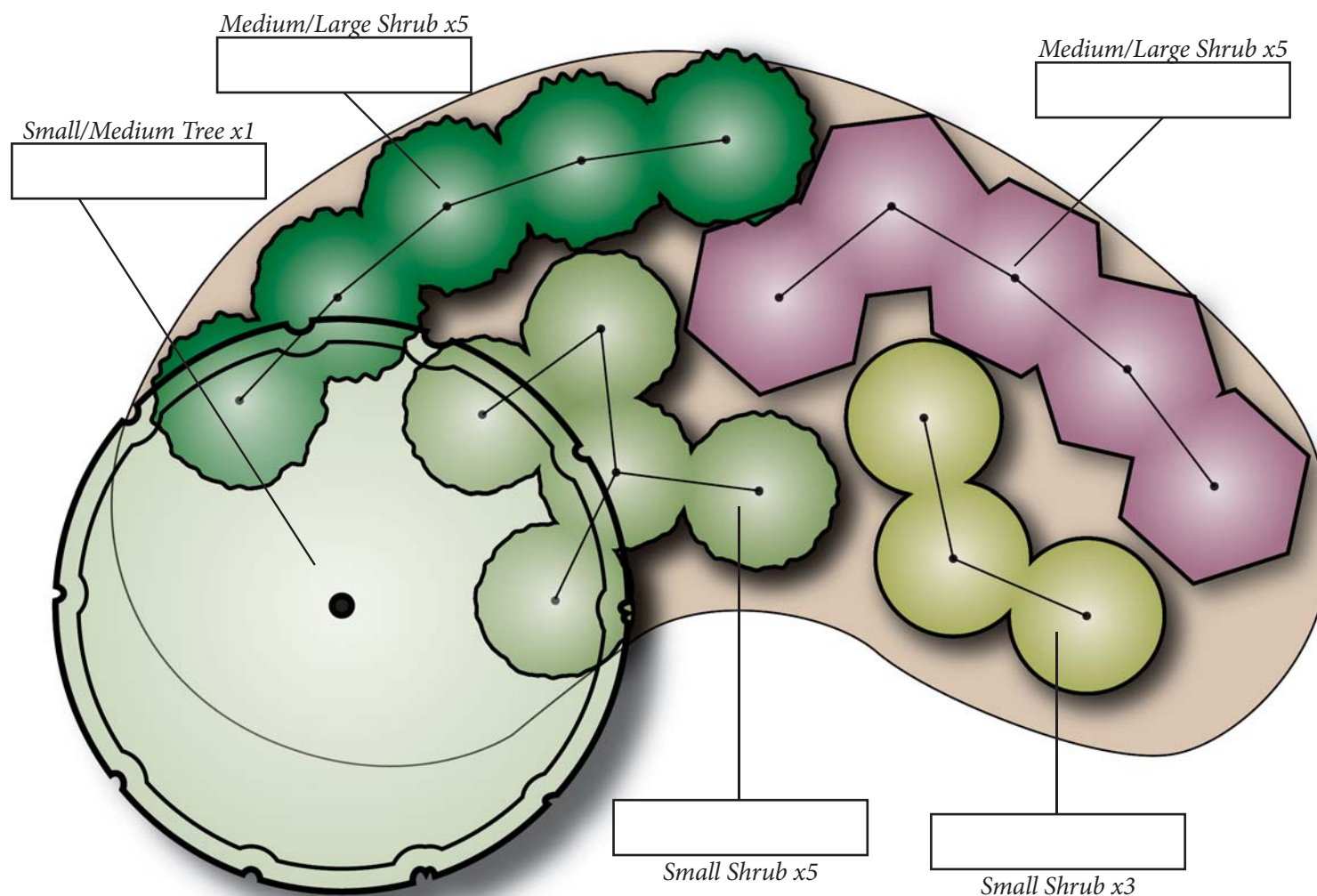
Refer to plant nursery tags and adjust as needed

Shrubs = 30"	Grasses = 18"	Perennials = 9-12"
--------------	---------------	--------------------

2 cubic feet of mulch covers ~12 square feet of the garden



Woody Screen Bayscape - 180 square feet (contained in 21 x 12.5 foot area)



Average Spacing between Plants

Refer to plant nursery tags and adjust as needed

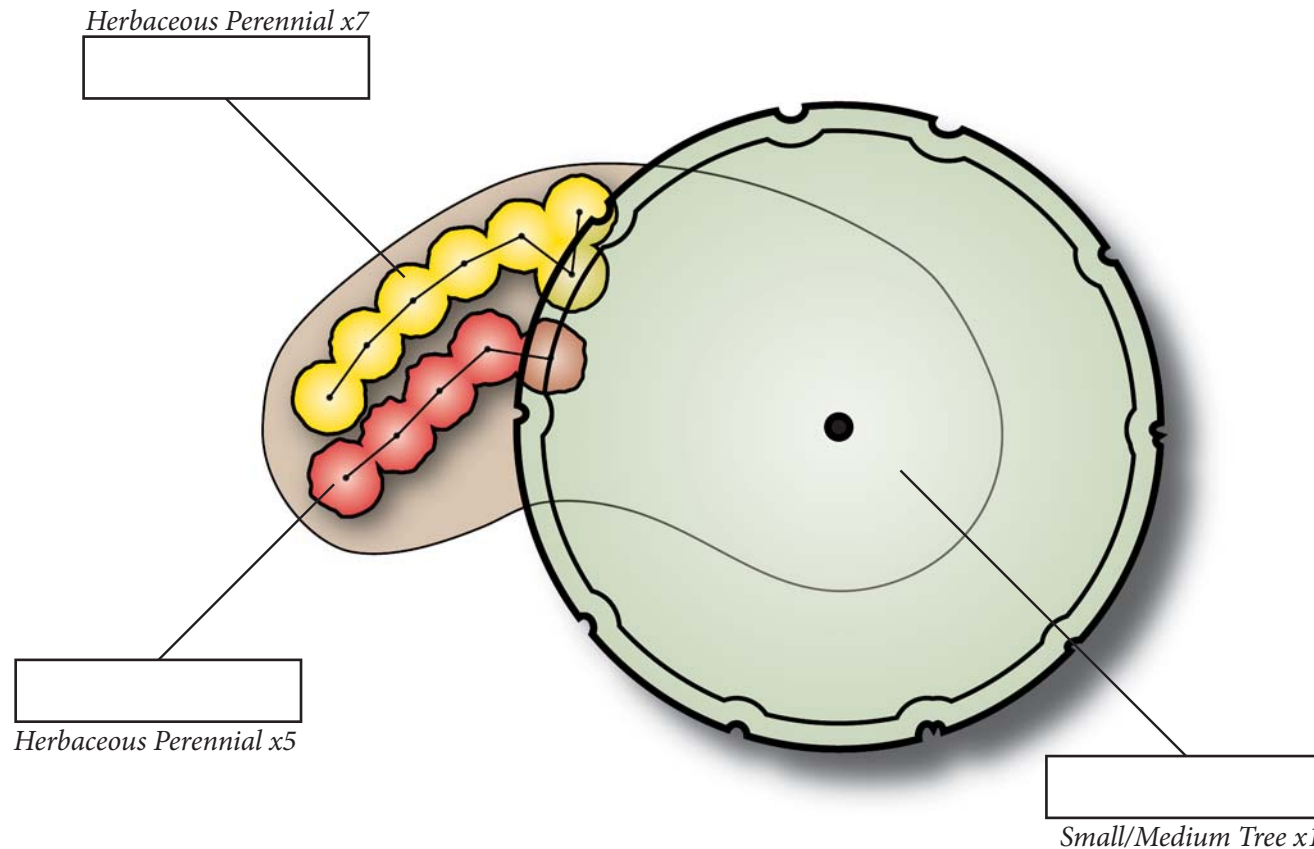
Shrubs = 30"	Grasses = 18"	Perennials = 9-12"
--------------	---------------	--------------------

2 cubic feet of mulch covers ~12 square feet of the garden



Consider adding a rain barrel to enhance your conservation landscape.

Flowering Tree Focal Point Bayscape - 60 square feet (contained in 11.5 x 6.5 foot area)



Scale: 1 inch = 3 feet

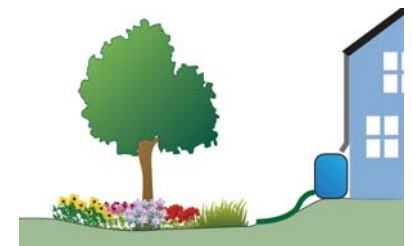


Average Spacing between Plants

Refer to plant nursery tags and adjust as needed

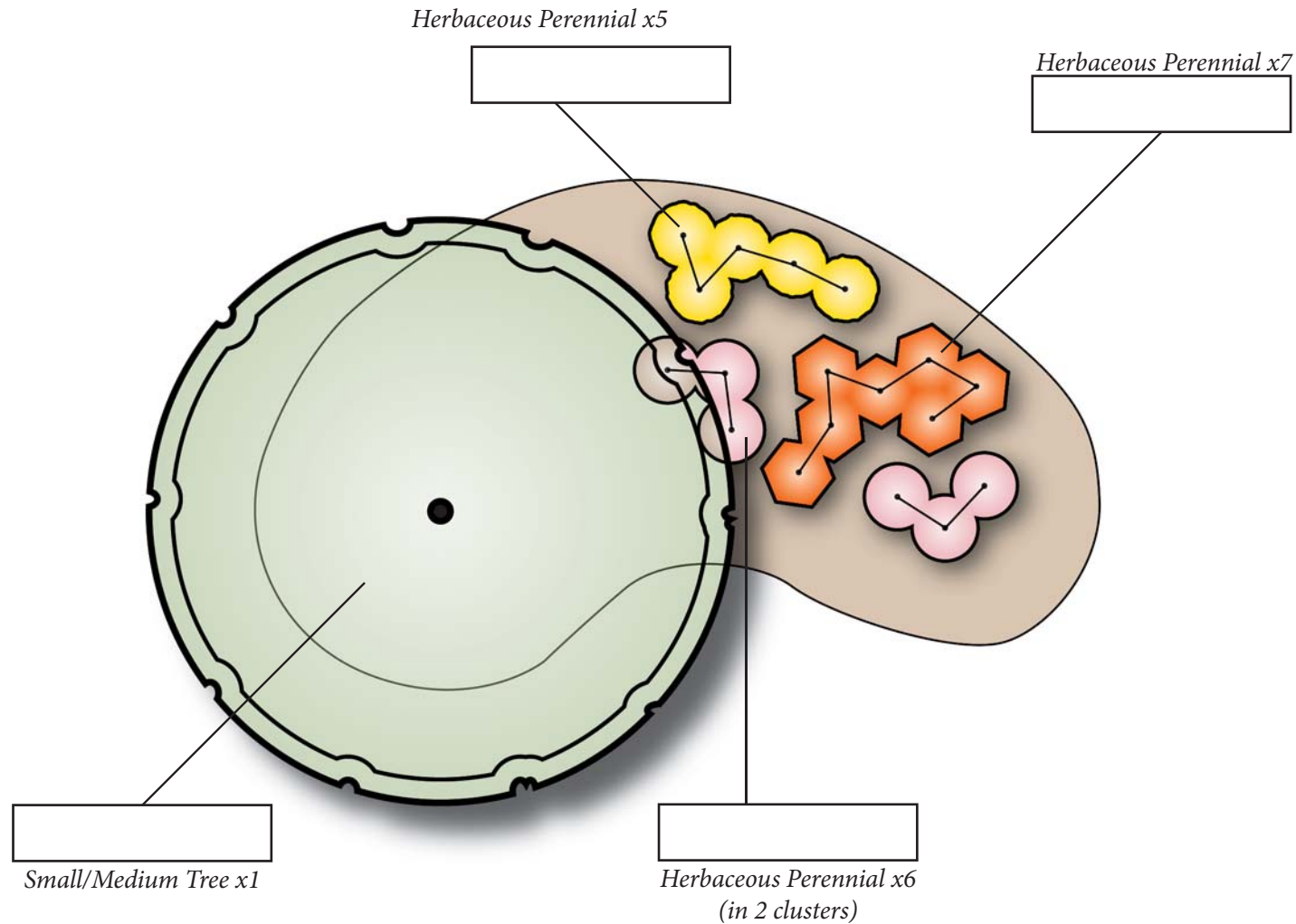
Shrubs = 30"	Grasses = 18"	Perennials = 9-12"
--------------	---------------	--------------------

2 cubic feet of mulch covers ~12 square feet of the garden



Consider adding a rain barrel to enhance your conservation landscape.

Flowering Tree Focal Point Bayscape - 90 square feet (contained in 14.5 x 9 foot area)



Scale: 1 inch = 3 feet

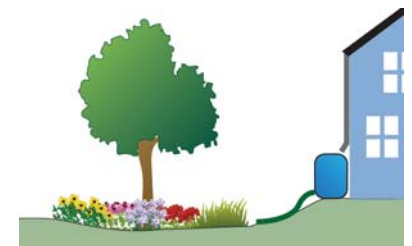


Average Spacing between Plants

Refer to plant nursery tags and adjust as needed

Shrubs = 30"	Grasses = 18"	Perennials = 9-12"
--------------	---------------	--------------------

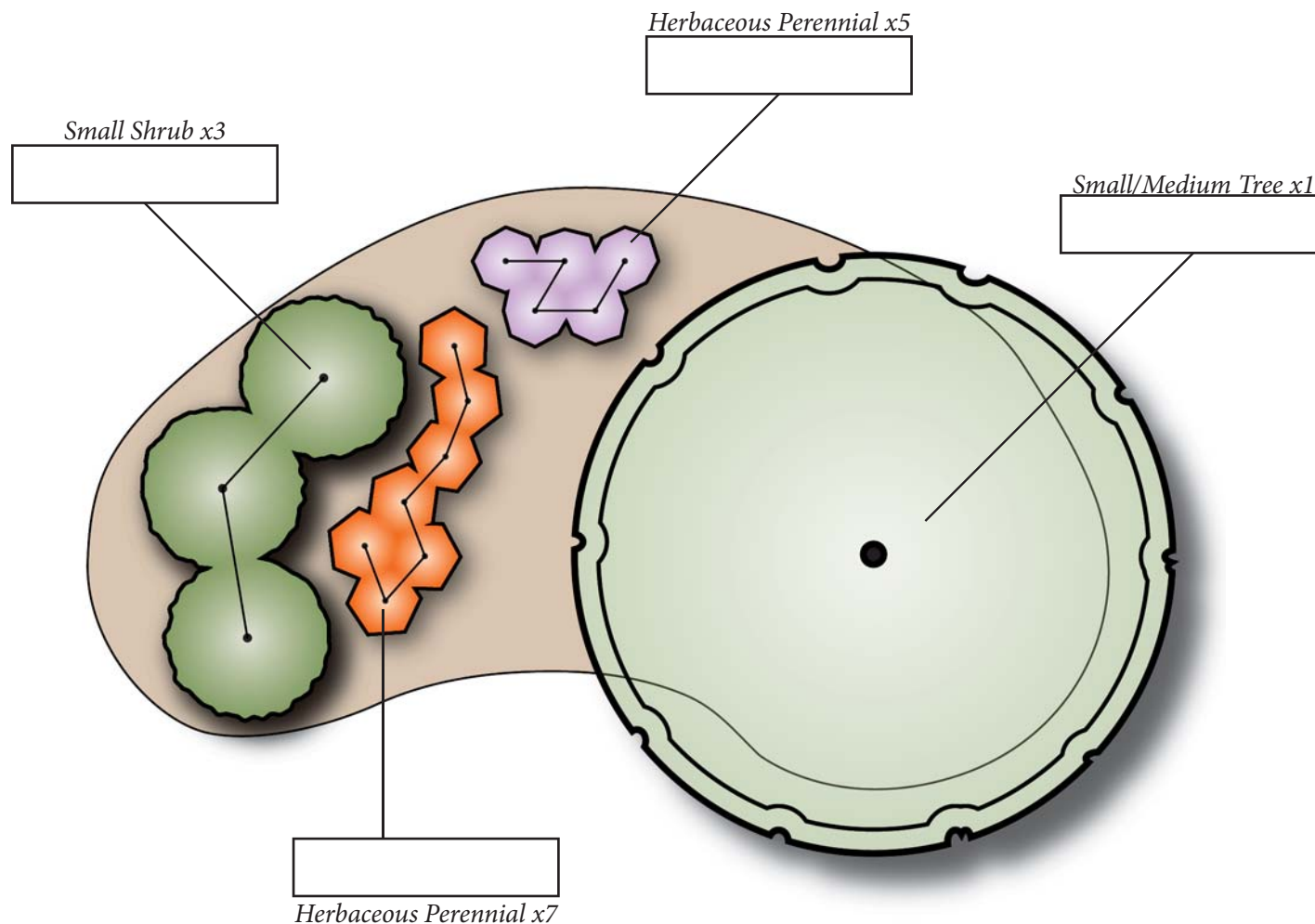
2 cubic feet of mulch covers ~12 square feet of the garden



Consider adding a rain barrel to enhance your conservation landscape.



Flowering Tree Focal Point Bayscape - 120 square feet (contained in 17 x 10.5 foot area)



Consider adding a rain barrel to enhance your conservation landscape.

Average Spacing between Plants
Refer to plant nursery tags and adjust as needed

Shrubs = 30"	Grasses = 18"	Perennials = 9-12"
--------------	---------------	--------------------

2 cubic feet of mulch covers ~12 square feet of the garden

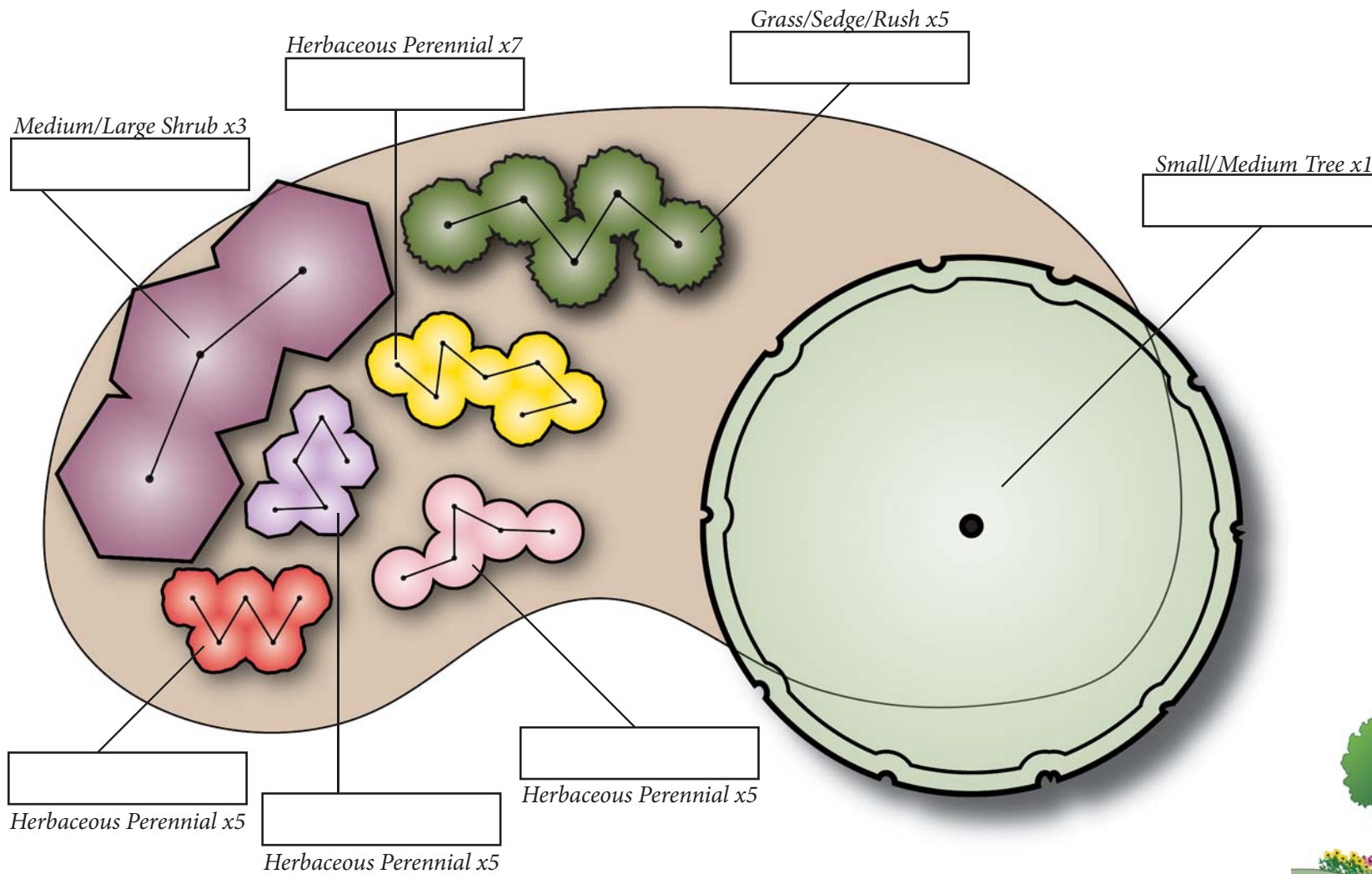
 **Alliance for the
Chesapeake Bay**
visit stormwater.allianceforthebay.org

**CENTER FOR
WATERSHED
PROTECTION**

 **WSA**
National Capital Region - Watershed Stewards Academy

 **National Fish and Wildlife Foundation**

Flowering Tree Focal Point Bayscape - 180 square feet (contained in 21 x 12.5 foot area)



Scale: 1 inch = 3 feet

0

3

6 Feet

Average Spacing between Plants

Refer to plant nursery tags and adjust as needed

Shrubs = 30"	Grasses = 18"	Perennials = 9-12"
--------------	---------------	--------------------

2 cubic feet of mulch covers ~12 square feet of the garden

 **Alliance for the
Chesapeake Bay**
visit stormwater.allianceforthebay.org

**CENTER FOR
WATERSHED
PROTECTION**

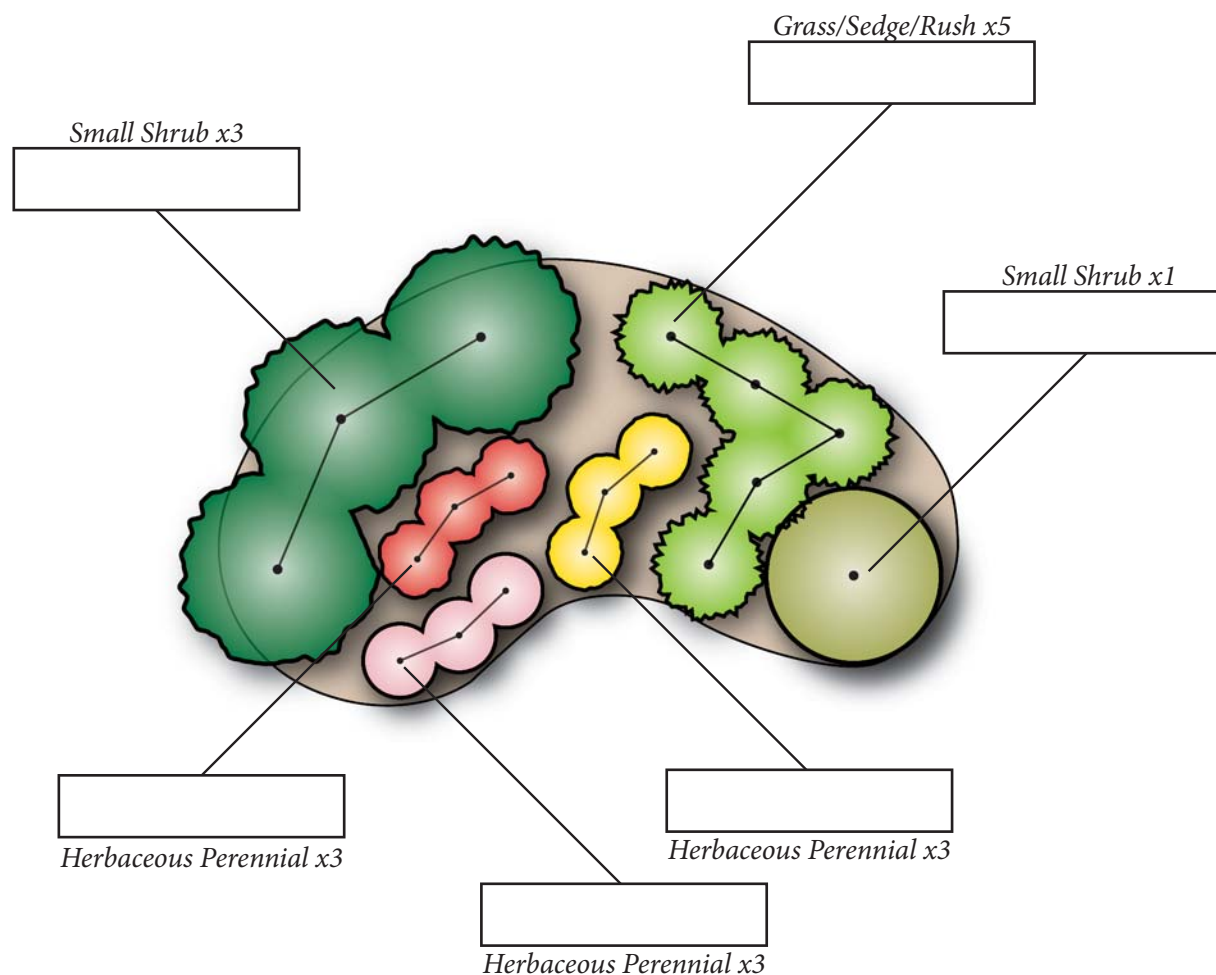
 **WSA**
National Capital Region • Watershed Stewards Academy

 **National Fish and Wildlife Foundation**



Consider adding a rain barrel to enhance your conservation landscape.

Typical Kidney Bayscape - 60 square feet (contained in 11.5 x 6.5 foot area)



Scale: 1 inch = 3 feet



Average Spacing between Plants

Refer to plant nursery tags and adjust as needed

Shrubs = 30"	Grasses = 18"	Perennials = 9-12"
--------------	---------------	--------------------

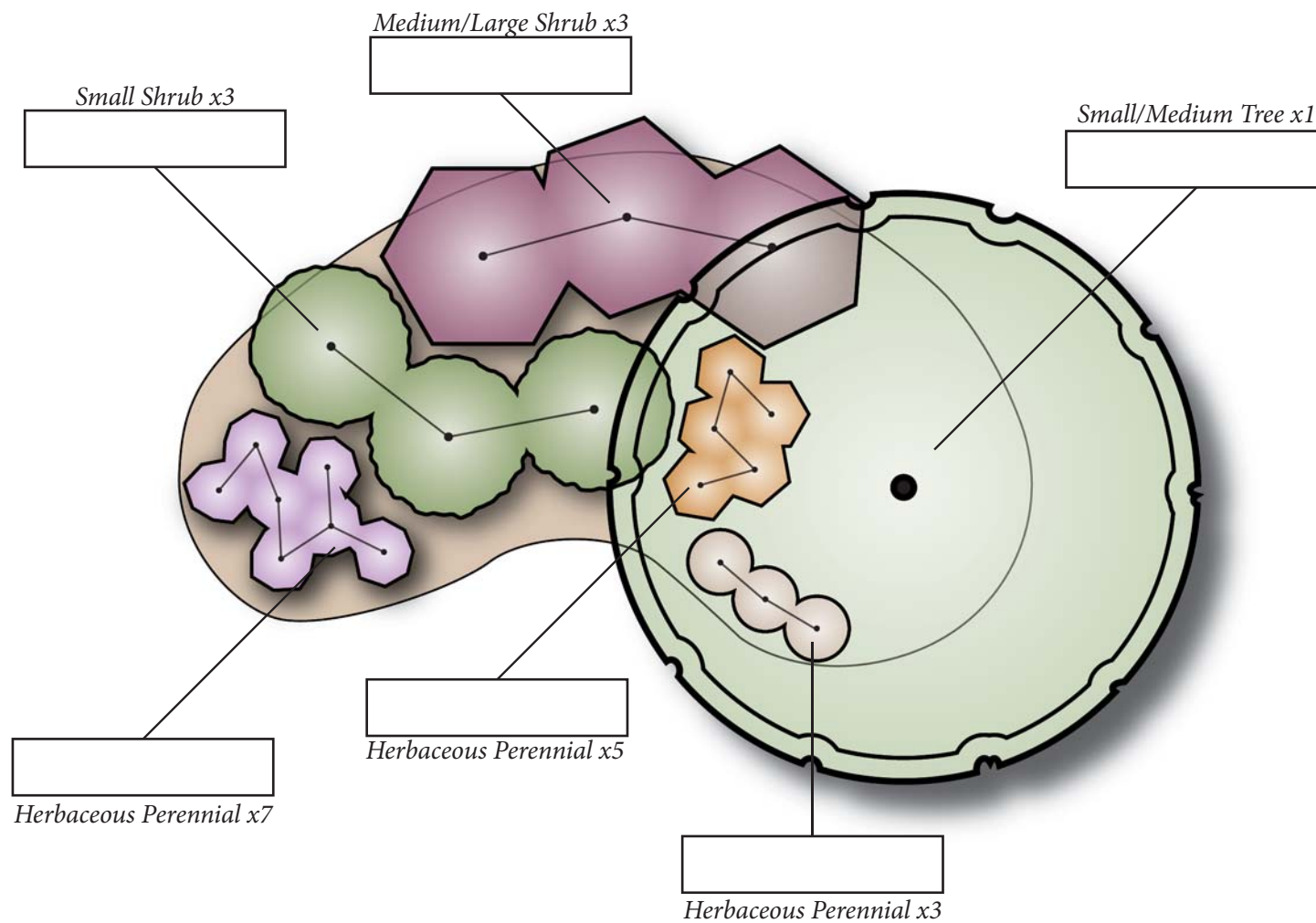
2 cubic feet of mulch covers ~12 square feet of the garden



Consider adding a rain barrel to enhance your conservation landscape.



Typical Kidney Bayscape - 90 square feet (contained in 14.5 x 9 foot area)



Scale: 1 inch = 3 feet



Average Spacing between Plants

Refer to plant nursery tags and adjust as needed

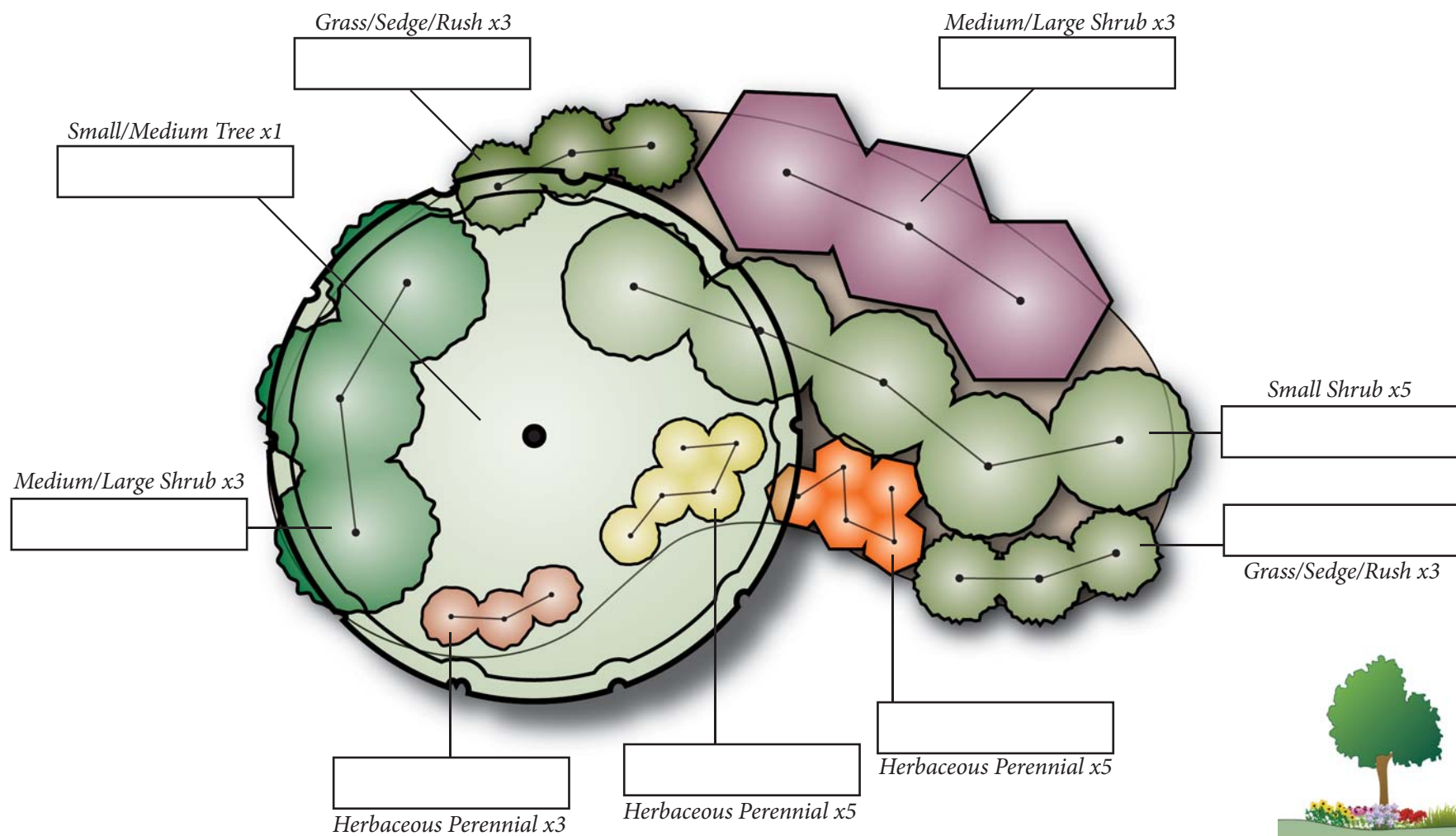
Shrubs = 30"	Grasses = 18"	Perennials = 9-12"
--------------	---------------	--------------------

2 cubic feet of mulch covers ~12 square feet of the garden



Consider adding a rain barrel to enhance your conservation landscape.

Typical Kidney Bayscape - 120 square feet (contained in 17 x 10.5 foot area)



Scale: 1 inch = 3 feet

0 3 6 Feet

Average Spacing between Plants

Refer to plant nursery tags and adjust as needed

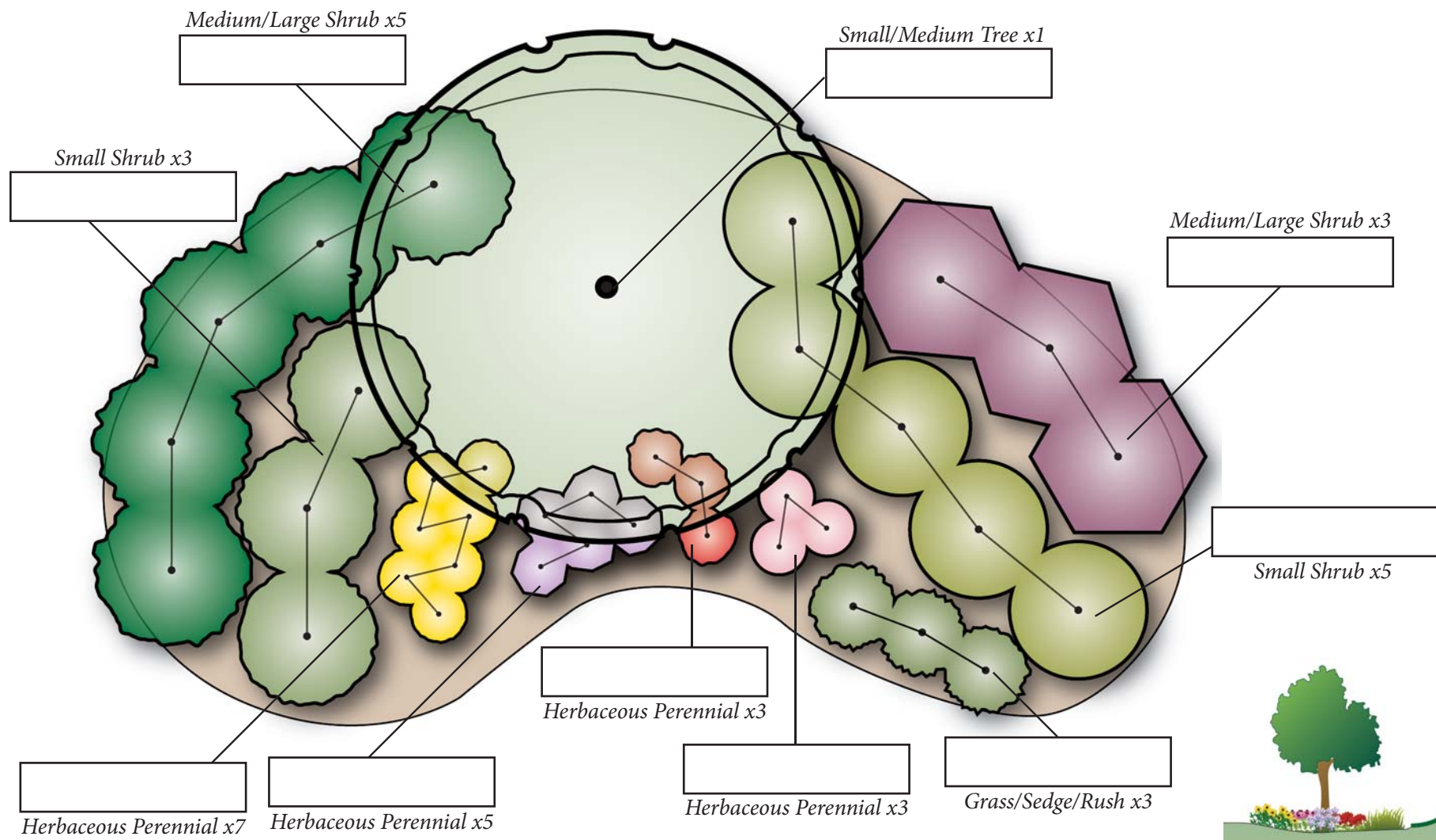
Shrubs = 30"	Grasses = 18"	Perennials = 9-12"
--------------	---------------	--------------------

2 cubic feet of mulch covers ~12 square feet of the garden

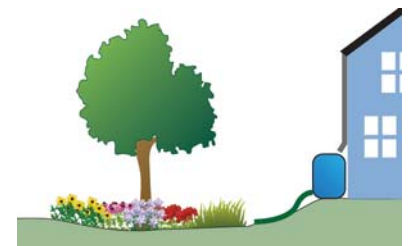


Consider adding a rain barrel to enhance your conservation landscape.

Typical Kidney Bayscape - 180 square feet (contained in 21 x 12.5 foot area)



Scale: 1 inch = 3 feet



Consider adding a rain barrel to enhance your conservation landscape.

Average Spacing between Plants

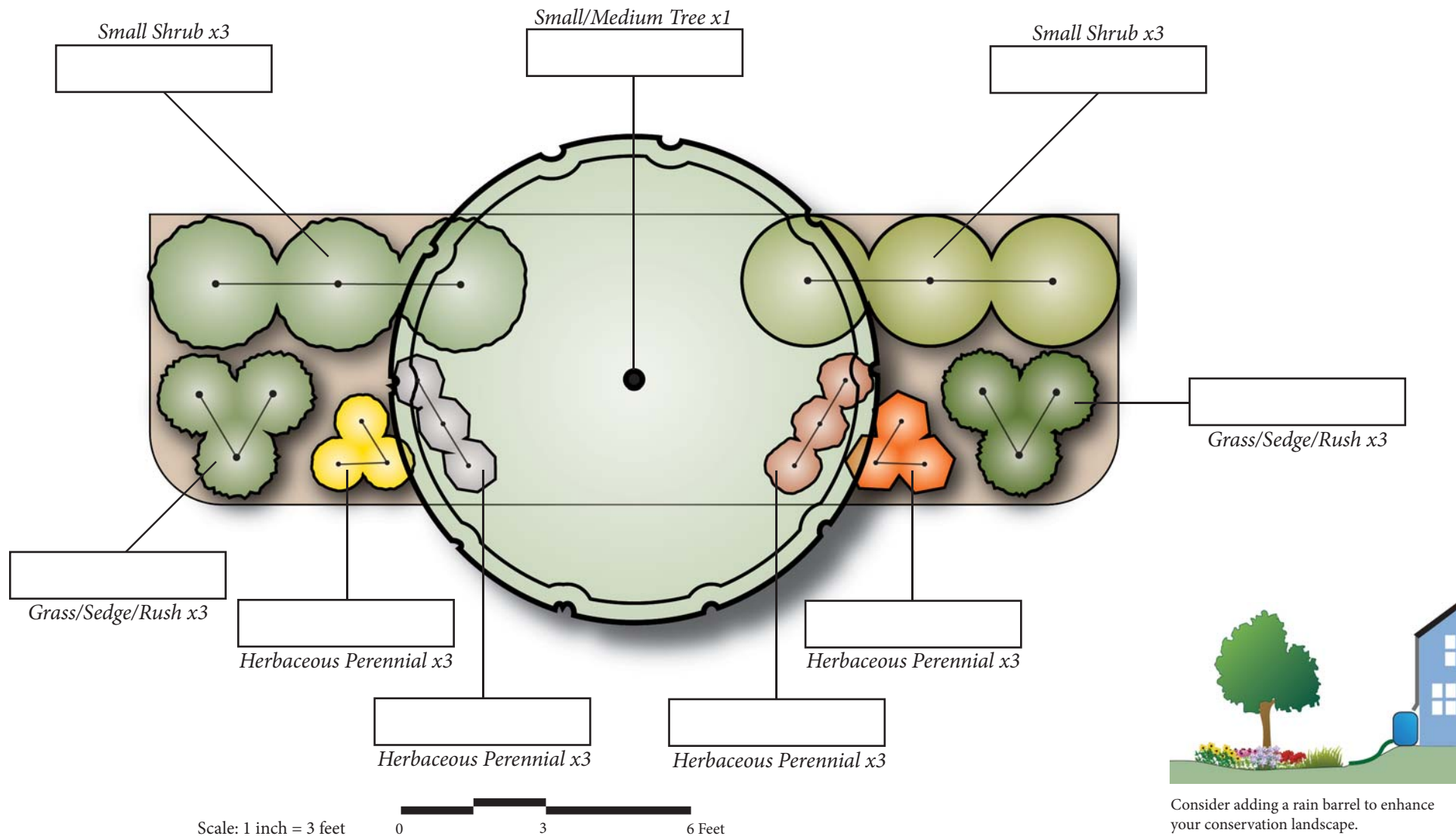
Refer to plant nursery tags and adjust as needed

Shrubs = 30"	Grasses = 18"	Perennials = 9-12"
--------------	---------------	--------------------

2 cubic feet of mulch covers ~12 square feet of the garden



Typical Edge Bayscape - 120 square feet (contained in 20 x 6 foot area)



Consider adding a rain barrel to enhance your conservation landscape.

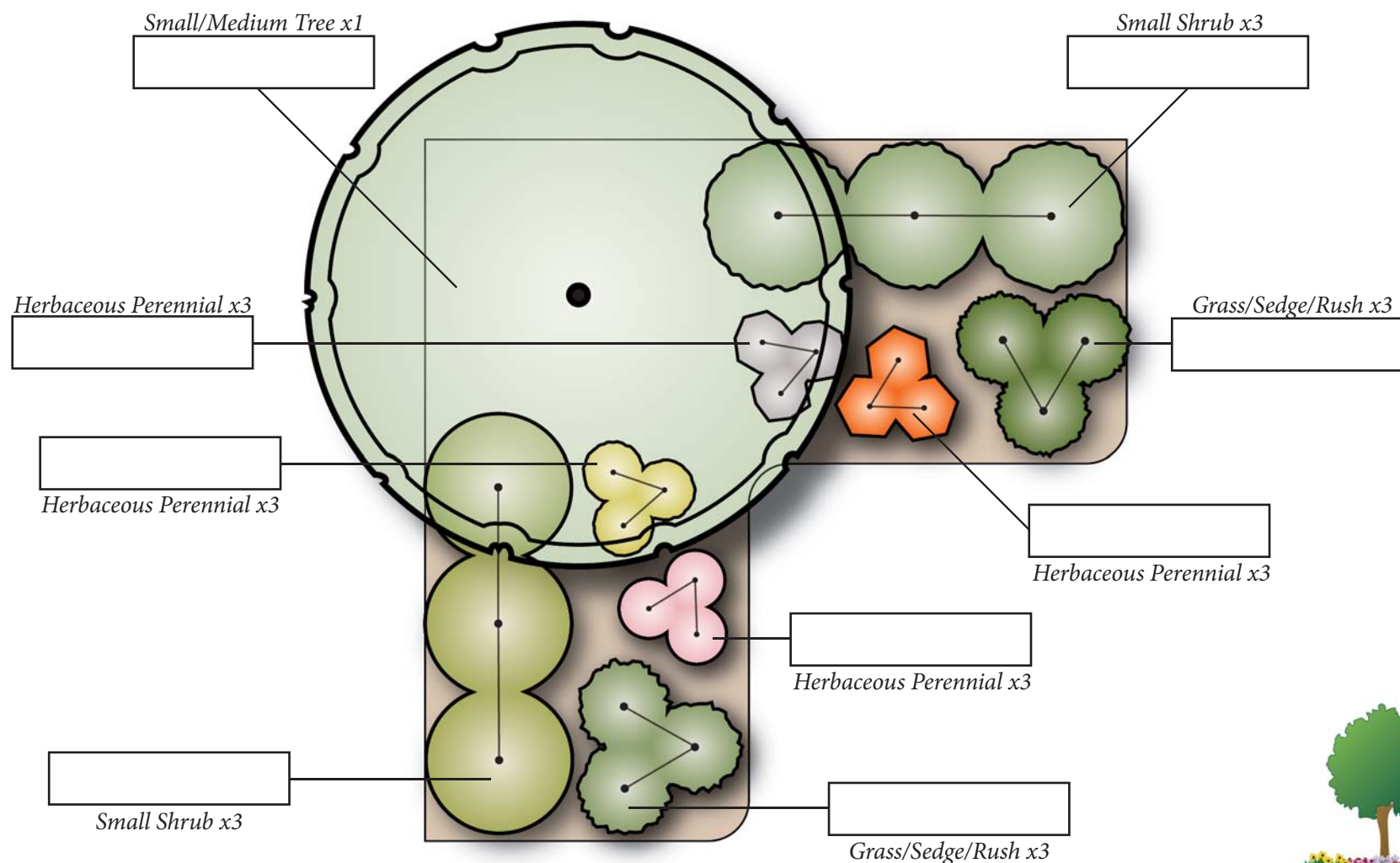
Average Spacing between Plants

Refer to plant nursery tags and adjust as needed

Shrubs = 30"	Grasses = 18"	Perennials = 9-12"
--------------	---------------	--------------------

2 cubic feet of mulch covers ~12 square feet of the garden

Typical Corner Bayscape - 120 square feet (contained in 13 x 13 x 6 foot area)



Scale: 1 inch = 3 feet



Average Spacing between Plants

Refer to plant nursery tags and adjust as needed

Shrubs = 30"	Grasses = 18"	Perennials = 9-12"
--------------	---------------	--------------------

2 cubic feet of mulch covers ~12 square feet of the garden



Consider adding a rain barrel to enhance your conservation landscape.